



**GUIDELINE ON THE COORDINATION PROCEDURE  
FOR THE MOBILE CELLULAR AND INTERNATIONAL  
MOBILE TELECOMMUNICATIONS (IMT) SYSTEMS  
OPERATING IN THE 850 MHz AND 900 MHz  
FREQUENCY BANDS**

Notice:

The information contained in this guideline is intended as a guide only and administrative in nature. For this reason, it should not be relied on as legal advice or regarded as a substitute for legal advice in individual cases. Parties should still refer to the legislative provisions contained in the law. The information contained in this guideline will be updated from time to time either via an addendum or revised guideline.

**©2023 by MCMC. All rights reserved.**

The information in this guideline is protected under copyright and save where otherwise stated, may be reproduced for non-commercial use provided it is reproduced accurately and not used in a misleading context. Where any information is reproduced, the Malaysian Communications and Multimedia Commission at the address below as the source of the information must be identified and the copyright status acknowledged.

No part of this guideline may be reproduced, stored in a retrieval system or transmitted in any form by electronic, photocopying, recording means or others, without prior written permission from the Malaysian Communications and Multimedia Commission

The permission to reproduce does not extend to any information or material the copyright of which belongs to any other person, organisation or third-party authorisation or permission to reproduce such information or material must be obtained from the copyright holders concerned.

Published by:  
Malaysian Communications and Multimedia Commission  
MCMC HQ Tower 1  
Jalan Impact  
Cyber 6  
63000 Cyberjaya  
Selangor Darul Ehsan  
Malaysia  
Tel : +603 8688 8000  
Fax : +603 8688 1000  
Website: [www.mcmc.gov.my](http://www.mcmc.gov.my)

**TABLE OF CONTENTS**

**ABBREVIATIONS..... 3**

**INTENT ..... 4**

**INTRODUCTION ..... 5**

**COORDINATION PROCEDURE FLOW CHART ..... 6**

**EFFECTIVE DATE ..... 7**

**REVISION ..... 7**

**REFERENCE..... 7**

**ANNEX 1 ..... 8**

## **ABBREVIATIONS**

<b>CMA98</b>	Communications and Multimedia Act 1998
<b>IMT</b>	International Mobile Telecommunications
<b>ITU</b>	International Telecommunication Union
<b>MCMC</b>	Malaysian Communications and Multimedia Commission
<b>MCS</b>	Mobile Cellular System
<b>SA</b>	Spectrum Assignment
<b>SRSP</b>	Standard Radio System Plan

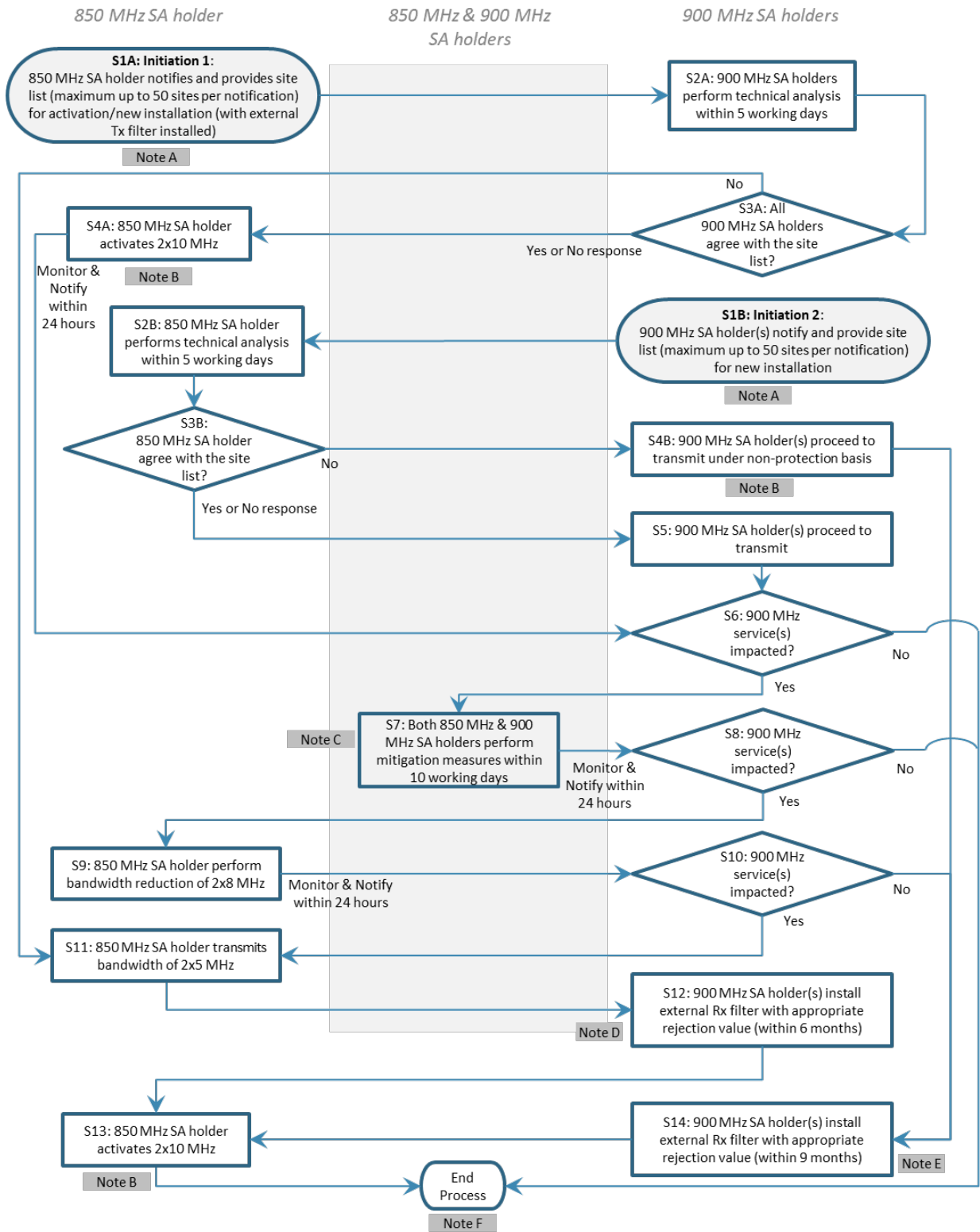
## **INTENT**

1. The intent of this guideline is to facilitate the SA holders of the 850 MHz and 900 MHz frequency bands for the coordination of the use of the MCS and IMT systems operating in the 824 MHz to 834 MHz paired with the 869 MHz to 879 MHz ("**850 MHz**") and the 880 MHz to 915 MHz paired with the 925 MHz to 960 MHz ("**900 MHz**") frequency bands and to ensure that the efficient utilisation of resources is in line with the CMA98, the Communications and Multimedia (Spectrum) Regulations 2000 ("**Spectrum Regulations**"), and the requirement of the ITU.
2. This guideline should be read together with the Standard Radio System Plan MS 850 & 900: Requirements for Mobile Cellular Systems and International Mobile Telecommunications Systems Operating in the Frequency Bands of 824 MHz to 834 MHz paired with 869 MHz to 879 MHz and 880 MHz to 915 MHz paired with 925 MHz to 960 MHz ("**SRSP MS 850 & 900**"), including any revision(s) made to the same thereafter, the CMA98, the relevant subsidiary legislations, instruments, technical codes and other guidelines that have been issued by MCMC.
3. Compliance with this guideline does not itself confer immunity from any legal obligations.
4. In the event of any inconsistencies between this guideline and the CMA98 or any subsidiary legislation made under the CMA98, the CMA98 or the said subsidiary legislation, as the case may be, shall prevail.

## **INTRODUCTION**

5. The 850 MHz and 900 MHz frequency bands are currently assigned by way of SA.
6. The SA for the 850 MHz and 900 MHz frequency bands shall be subject to all conditions as specified in regulations 10 and 15 of the Spectrum Regulations, and any other conditions as may be imposed by MCMC from time to time.
7. As part of the conditions of the SA, the use of the 850 MHz and 900 MHz frequency bands by SA holders is subject to the requirements specified in the SRSP MS 850 & 900 issued by MCMC, including any revisions of the SRSP MS 850 & 900.
8. In the event of interference for the MCS and IMT systems between the 850 MHz and 900 MHz frequency bands, the same may be mitigated with several methods as provided in the SRSP MS 850 & 900.
9. This guideline contains a coordination procedure flow chart to facilitate the operator-to-operator coordination for the coexistence of MCS and IMT between the 850 MHz and 900 MHz frequency bands.
10. The SA holders may apply additional coordination processes and mitigation measures beyond those specified in this guideline as deemed necessary.

# COORDINATION PROCEDURE FLOW CHART



- Note A:** Number of sites may be increased per batch and an extension of up to 3 working days may be requested upon mutual agreement between 850 MHz and 900 MHz bands SA holders.
- Note B:** To ensure the site in the list submitted to MCMC are the sites that have been “coordinated”, the relevant SA holder shall submit the site list with the coordination start date, status of coordination (coordination completed or temporary transmission) and the coordination complete date.
- Note C:** The mitigation measures may be based on SRSP MS 850 & 900. These may exclude external Rx filter and bandwidth reduction.
- Note D:** External Rx filter installation process start date begins when 900 MHz SA holder(s) notify no service impact status at **S3A** or **S10**.
- Note E:** External Rx filter installation process start date begins when 850 MHz or 900 MHz SA holder(s) notify service impact status at **S3B** or **S10**.
- Note F:** Further service impact to be treated case by case basis guided by SRSP MS 850 & 900.

## **EFFECTIVE DATE**

11. This guideline shall come into effect on 1 January 2024.

## **REVISION**

12. This guideline may be revised or varied from time to time as and when MCMC deems it necessary and may also be revoked accordingly without any prior notice.

## **REFERENCE**

- i. **SRSP MS 850 & 900** – Requirements for Mobile Cellular Systems and International Mobile Telecommunications Systems Operating in the Frequency Bands of 824 MHz to 834 MHz paired with 869 MHz to 879 MHz and 880 MHz to 915 MHz paired with 925 MHz to 960 MHz.



## **ANNEX 1**

### NOTE A

Number of sites per notification may be increased per batch basis and an extension of up to 3 working days may be requested upon mutual agreement between the 850 MHz and 900 MHz bands SA holders.

### NOTE B

To ensure the site in the list submitted to MCMC are the sites that have been coordinated, the relevant SA holder shall submit the site list with the coordination start date, status of coordination (coordination completed or temporary transmission), and the coordination complete date.

### NOTE C

All mitigation measures may be based on SRSP MS 850 & 900. These may exclude the installation of external Rx filters and the reduction of 850 MHz bandwidth.

### NOTE D

External Rx filter installation process start date begins when 900 MHz SA holder(s) notify no service impact status at S3A or S10.

### NOTE E

External Rx filter installation process start date begins when 850 MHz or 900 MHz SA holder(s) notify service impact status at S3B or S10.

### NOTE F

Further service impact is to be treated case by case basis guided by SRSP MS 850 & 900.